

For appropriate pediatric patients with chronic severe drooling associated with neurologic conditions...

# Count on CUVPOSA



For dependable dosing to  
help achieve visible results\*

\* CUVPOSA® is the only FDA-approved prescription medication to help reduce chronic severe drooling in children aged 3 to 16 years with neurologic conditions that cause too much (abnormal) drooling.

Do not give your child CUVPOSA if your child has problems urinating; has a bowel problem called paralytic ileus; lacks normal bowel tone or tension; has severe ulcerative colitis or certain other serious bowel problems with severe ulcerative colitis; has myasthenia gravis.

**Please see full  
Important Safety  
Information on  
pages 7 through 8.**

 **cuVposa**®  
glycopyrrolate (1 mg/5 mL)  
oral solution



**CUVPOSA is the only FDA approved prescription medication** to help reduce chronic severe drooling in children aged 3 to 16 years with neurologic conditions that cause too much (abnormal) drooling.

For more information, go to:  
[www.CUVPOSA.com](http://www.CUVPOSA.com)

Please see full Important Safety Information on pages 7 through 8. Please see full Prescribing Information at the end of this brochure.

## What is CUVPOSA?

CUVPOSA is a prescription medication to help reduce chronic severe drooling in children aged 3 to 16 years with neurologic conditions that cause too much (abnormal) drooling. If your child is between the ages of 3 and 16, CUVPOSA may make a difference for him or her. This brochure will provide you with the basic information you need to know about CUVPOSA. To learn more about CUVPOSA, please talk to your child's doctor or visit [www.CUVPOSA.com](http://www.CUVPOSA.com).

## Who should not take CUVPOSA?

**Do not give your child CUVPOSA if your child:**

- Has problems urinating
- Has a bowel problem called paralytic ileus
- Lacks normal bowel tone or tension
- Has severe ulcerative colitis or certain other serious bowel problems with severe ulcerative colitis
- Has myasthenia gravis



 **cuvposa**<sup>®</sup>  
glycopyrrolate (1 mg/5 mL)  
oral solution

## Designed with you and your child in mind

The makers of CUVPOSA understand the complexities of managing problem drooling associated with your child's neurologic condition. CUVPOSA is a uniform, premixed liquid, which:

- Lets your child's doctor adjust the dose based on the improvement and side effects your child may experience—designed to deliver an individualized dose for your child's needs
- Helps ensure that your child receives the intended dose
- Makes it more convenient for you to give it to your child—no burden of crushing pills and mixing them in food\*
  - Use an accurate dose-measuring cup to get the right dose of CUVPOSA

## Premixed liquid formulation means no crushing or mixing in food\*



\*Give CUVPOSA at least 1 hour before or 2 hours after meals.

## How should I give CUVPOSA to my child?

- Give CUVPOSA exactly as prescribed by your child's doctor
- Give CUVPOSA 1 hour before or 2 hours after meals
- Your child's doctor will tell you how much (milliliters or mLs) CUVPOSA to give your child
- Do not change the dose of CUVPOSA unless your child's doctor tells you to
- You must measure the dose of CUVPOSA before giving it to your child. Use a specially marked dose-measuring cup (available at most pharmacies) to measure the right dose of CUVPOSA
- To help make sure that your child swallows the dose, you should use an oral syringe to give the child each dose of CUVPOSA, after you measure the dose needed with a dose-measuring cup. Oral syringes are also available at most pharmacies
- If you have questions about how to measure the dose or how to use an oral syringe, ask your child's pharmacist or doctor
- The dose of CUVPOSA that is needed to control drooling may be different for each child. CUVPOSA is usually started at a low dose and slowly increased as directed by your child's doctor. This slow increase in dose continues until the best dose for your child is reached to control drooling
- During this time, it is important to stay in close contact with your child's doctor, and tell the doctor about any side effects that your child has

Please see full Important Safety Information on pages 7 through 8. Please see full Prescribing Information at the end of this brochure.

## Reduction in drooling

CUVPOSA was tested in a clinical trial. At the end of this study—8 weeks after starting treatment—3 out of 4 patients who were given CUVPOSA saw a reduction in drooling. Only 1 out of 9 patients who received the placebo\* saw a reduction after 8 weeks. And patients treated with CUVPOSA saw reductions by the fourth week of treatment.

**Three out of 4 patients** had less drooling with **CUVPOSA**.



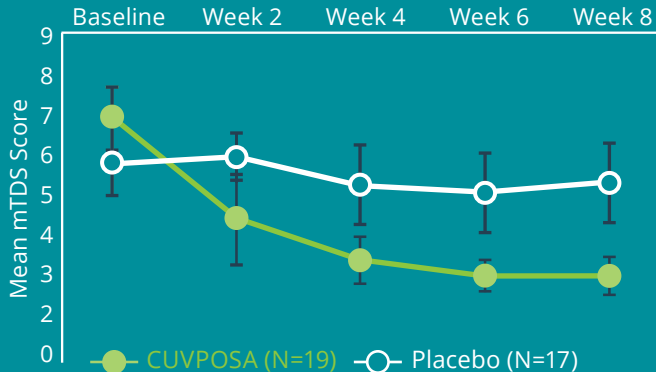
### What should my child avoid while taking CUVPOSA?

- CUVPOSA may cause sleepiness or blurred vision. Your child should not drive a car, operate heavy machinery, or do other dangerous activities while taking CUVPOSA
- Your child should avoid overheating. See “What are the possible side effects of CUVPOSA?”

\*In the clinical trial, half the patients, chosen at random, received CUVPOSA; the other half received a placebo (similar looking and tasting liquid with no medicine in it). Neither the patients nor the doctors knew who got which until the trial was completed.

**Please see full Important Safety Information on pages 7 through 8. Please see full Prescribing Information at the end of this brochure.** 4 of 20

## Patients on **CUVPOSA** saw a significant response by Week 4



### Measuring the reduction

To measure the amount of drooling before and after treatment, the doctors used the modified Teacher's Drooling Scale (mTDS). It provides a numerical score based on how often a child drools and how severe it is. The scale goes from 1 to 9. One is the lowest level of drooling; 9 is the highest.

#### Nine-Point mTDS

1. Dry: never drools
2. Mild: only the lips are wet; occasionally
3. Mild: only the lips are wet; frequently
4. Moderate: wet on the lips and chin; occasionally
5. Moderate: wet on the lips and chin; frequently
6. Severe: drools to the extent that clothing becomes damp; occasionally
7. Severe: drools to the extent that clothing becomes damp; frequently
8. Profuse: clothing, hands, tray, and objects become wet; occasionally
9. Profuse: clothing, hands, tray, and objects become wet; frequently

In this clinical trial, an improvement was defined as at least a 3-point reduction in the drooling scale (eg, the patient started at 7 and ended at 4).

 **cuVPOSA**<sup>®</sup>  
glycopyrrolate (1 mg/5 mL)  
oral solution

## Where can I get CUVPOSA?

CUVPOSA is available from most retail pharmacies. It may take at least 24 hours to complete an order.

## What are the possible side effects of CUVPOSA?

**CUVPOSA can cause serious side effects, including:**

**Constipation.** Constipation is common with CUVPOSA. Tell your child's doctor if your child strains with bowel movements, goes longer between bowel movements, cannot have a bowel movement, or his or her stomach is firm and large. The dose of CUVPOSA may need to be decreased or stopped.

**Diarrhea and intestinal blockage.** Diarrhea can be an early symptom of a blockage in the intestine. This is especially true if your child has a colostomy or ileostomy. Tell your child's doctor if your child has any diarrhea while taking CUVPOSA.

**Problems with control of body temperature (overheating or heatstroke).** CUVPOSA can cause your child to sweat less. Your child can become overheated and develop heatstroke if he or she is in an area that is very hot. Avoid overheating. Call your child's doctor right away if your child becomes sick and has any of these symptoms of heatstroke:

- Hot, red skin
- Decreased alertness or passing out (unconsciousness)
- Fast, weak pulse
- Fast, shallow breathing
- Increased body temperature (fever)

**The most common side effects of CUVPOSA include:**

- Dry mouth
- Vomiting
- Flushing of the face or skin
- Nasal congestion
- Headache
- Swollen sinuses (sinusitis)
- Upper respiratory tract infection
- Problems urinating, difficulty starting urination

Tell your child's doctor if your child has any side effect that concerns you or that does not go away. These are not all the possible side effects of CUVPOSA.

Call your child's doctor for medical advice about side effects. You may report side effects to the FDA at **1-800-FDA-1088**.

For more information, go to:  
[www.CUVPOSA.com](http://www.CUVPOSA.com)

Please see full Important Safety Information on pages 7 through 8. Please see full Prescribing Information at the end of this brochure.

## What should I tell the doctor before giving CUVPOSA to my child?

### Tell your child's doctor if your child:

- Has any allergies
- Has any stomach or bowel problems, including ulcerative colitis
- Has any problems with constipation
- Has thyroid problems
- Has high blood pressure
- Has heart problems or abnormal heartbeats
- Has a hiatal hernia with gastroesophageal reflux disease (GERD)
- Has any eye problems
- Has any problems urinating
- Has any other medical conditions
- Is pregnant or plans to become pregnant. It is not known if CUVPOSA can harm an unborn baby
- Is breastfeeding or plans to breastfeed. It is not known if CUVPOSA passes into breast milk and if it can harm the baby

**Tell your child's doctor about all the medicines that your child takes**, including prescription and nonprescription medicines, vitamins, and herbal supplements. Some medicines may affect the way CUVPOSA works, and CUVPOSA may affect how some other medicines work.

## How should I store CUVPOSA?

Store CUVPOSA between 68°F to 77°F (20°C to 25°C).

Keep CUVPOSA out of the reach of children.

### General information about CUVPOSA:

Medicines are sometimes prescribed for purposes other than those listed in a patient information leaflet. Children should not use CUVPOSA for a condition for which it was not prescribed. Do not give CUVPOSA to other people even if they have the same condition as your child. It may harm them.

This brochure summarizes the most important information about CUVPOSA. If you would like more information, talk with your child's doctor.

For more information, please visit

[www.CUVPOSA.com](http://www.CUVPOSA.com) or call 1-844-469-6379

## What are the ingredients in CUVPOSA?

Active ingredient: glycopyrrolate

Inactive ingredients: citric acid, glycerin, natural and artificial cherry flavor, methylparaben, propylene glycol, propylparaben, saccharin sodium, sodium citrate, sorbitol solution, and purified water.

For more information, go to:  
[www.CUVPOSA.com](http://www.CUVPOSA.com)



## Helping with out-of-pocket costs

You, your child's doctor, and your insurance company will determine what coverage and out-of-pocket costs you may have with CUVPOSA.

To help cover these out-of-pocket costs, the makers of CUVPOSA created the **CUVPOSA Co-Pay Program** allowing eligible patients to **pay as little as \$0** each time a CUVPOSA prescription is filled.\*

Visit [www.CUVPOSA.com](http://www.CUVPOSA.com) to download and print a CUVPOSA Co-Pay Card.



### To be eligible,\*

- patients must be between the ages of 3 years and 16 years of age
- primary caregivers must be at least 18 years old
- patients must have commercial insurance that covers CUVPOSA treatment costs
- patients must not be eligible for or covered by any state or federally funded prescription insurance programs such as Medicare Part D, Part B, Medicaid, Medigap, Veterans Affairs (VA), Department of Defense (DoD) or TRICARE
- For residents of Rhode Island, Michigan, Minnesota, and Massachusetts, further restrictions apply. See Terms and Conditions by visiting [www.CUVPOSA.com](http://www.CUVPOSA.com)

\* Further restrictions apply to eligibility. Please visit [www.CUVPOSA.com](http://www.CUVPOSA.com) for full terms and conditions. To enroll in CUVPOSA Co-Pay Program, please call **1-888-535-1978**.

Please see full Important Safety Information on pages 7 through 8. Please see full Prescribing Information at the end of this brochure.

## CUVPOSA® IMPORTANT SAFETY INFORMATION

### Uses

CUVPOSA is a prescription medicine used in children aged 3 to 16 years with medical conditions that cause too much (abnormal) drooling.

### Do not give CUVPOSA to anyone who:

has problems urinating, has a bowel problem called paralytic ileus, lacks normal bowel tone or tension, has severe ulcerative colitis or certain other serious bowel problems with severe ulcerative colitis, or has myasthenia gravis.

### Warnings:

CUVPOSA can cause serious side effects including: **Constipation.** Constipation is common with CUVPOSA. Tell your doctor if your child strains with bowel movements, goes longer between bowel movements, cannot have a bowel movement, or if their stomach is firm and large. The dose of CUVPOSA may need to be decreased or stopped.

**Diarrhea and intestinal blockage.** Diarrhea can be an early symptom of a blockage in the intestine. This is especially true if your child has a colostomy or ileostomy. Tell your doctor if your child has any diarrhea while taking CUVPOSA.

**Problems with control of body temperature (overheating or heat stroke).** CUVPOSA can cause your child to sweat less. Your child can become overheated, and develop heat stroke if they are in an area that is very hot. Avoid overheating. Call your doctor right away if your child becomes sick and has any of these symptoms of heatstroke: hot, red skin; decreased alertness or passing out (unconsciousness); fast, weak pulse; fast, shallow breathing; increased body temperature (fever)

The most common side effects of CUVPOSA include:

- dry mouth
- vomiting
- flushing of the face or skin
- nasal congestion
- headache
- swollen sinuses (sinusitis)
- upper respiratory tract infection
- problem urinating, difficulty starting urination

 **cuVPOSA**<sup>®</sup>  
glycopyrrolate (1 mg/5 mL)  
oral solution

## IMPORTANT SAFETY INFORMATION (CONTINUED)

CUVPOSA may cause sleepiness or blurred vision. Do not drive a car, operate heavy machinery, or do other dangerous activities while taking CUVPOSA.

Tell your doctor if you have any side effect that bothers you or that does not go away. These are not all the possible side effects of CUVPOSA. For more information, talk to your doctor.

Call your doctor for medical advice about side effects. You may report side effects to FDA at 1-800-FDA-1088.

### Tell your doctor if your child:

- has any allergies
- has any stomach or bowel problems, including ulcerative colitis
- has any problems with constipation
- has thyroid problems
- has high blood pressure
- has heart problems or abnormal heart beats
- has a hiatal hernia with gastroesophageal reflux disease (GERD)
- has any eye problems
- has any problems urinating
- has any other medical conditions
- if pregnant or plans to become pregnant. It is not known if CUVPOSA can harm an unborn baby.
- is breastfeeding or plans to breastfeed. It is not known if CUVPOSA passes into breast milk and if it can harm the baby.

**Tell your doctor about all of the medicines that your child takes**, including prescription and non-prescription medicines, vitamins, and herbal supplements. Some medicine may affect the way CUVPOSA works, and CUVPOSA may affect how some other medicines work.

**Please see full Important Safety Information on pages 7 through 8. Please see full Prescribing Information at the end of this brochure.**

 **cuVPOSA**<sup>®</sup>  
glycopyrrolate (1 mg/5 mL)  
oral solution

### Directions:

- Give CUVPOSA exactly as prescribed by your child's doctor.
- Give CUVPOSA 1 hour before or 2 hours after meals.
- Your doctor will tell you how much milliliters or mLs of CUVPOSA to give your child.
- Do not change the dose of CUVPOSA unless your doctor tells you to.
- You must measure the dose of CUVPOSA before giving it to your child. Use a special marked dose measuring cup (available at most pharmacies) to measure the right dose of CUVPOSA.
- To help make sure that your child swallows the dose, you should use an oral syringe to give the child each dose of CUVPOSA, after you measure the dose needed with a dose measuring cup. Oral syringes are also available at most pharmacies.
- If you have questions about how to measure the dose or how to use an oral syringe, ask your pharmacist or doctor.
- The dose of CUVPOSA that is need to control drooling may be different for each child. CUVPOSA is usually started at a low dose, and slowly increased as directed by your doctor. This slow increase in dose continues until the best dose for your child is reached, to control drooling.
- During this time it is important to stay in close contact with your child's doctor, and tell the doctor about any side effects that your child has. See "Warnings".

**Inactive ingredients:** citric acid, glycerin, natural and artificial cherry flavor, methylparaben, propylene glycol, propylparaben, saccharin sodium, sodium citrate, sorbital solution, and purified water.

Read this Medication Guide before your child starts receiving CUVPOSA and each time you get a refill as there may be new informatoin. The risk information provided here is not comprehensive. To learn more:

- Talk to your health care provider or pharmacist
- Visit [www.cuvposa.com](http://www.cuvposa.com) to obtain the FDA-approved product labeling
- Call 1-877-469-6379



**Please see full Important Safety Information on pages 7 through 8. Please see full Prescribing Information at the end of this brochure.**



Copyright © 2017 Merz Pharmaceuticals, LLC. All rights reserved. CUVPOSA is a registered trademark of Merz Pharmaceuticals, LLC. Merz and the Merz logo are registered trademarks of Merz Pharma GmbH & Co. KGaA.  
EM03834-00

 **cuvposa**<sup>®</sup>  
glycopyrrolate (1 mg/5 mL)  
oral solution

## HIGHLIGHTS OF PRESCRIBING INFORMATION

These highlights do not include all the information needed to use CUVPOSA® safely and effectively. See full prescribing information for CUVPOSA.

**CUVPOSA (glycopyrrolate) oral solution**  
**Initial U.S. Approval: 1961**

### INDICATIONS AND USAGE

CUVPOSA is an anticholinergic indicated to reduce chronic severe drooling in patients aged 3-16 years with neurologic conditions associated with problem drooling (e.g., cerebral palsy). (1)

### DOSAGE AND ADMINISTRATION

- Initiate dosing at 0.02 mg/kg three times daily and titrate in increments of 0.02 mg/kg every 5-7 days, based on therapeutic response and adverse reactions. (2)
- Maximum recommended dose is 0.1 mg/kg three times daily, not to exceed 1.5-3 mg per dose based upon weight. (2)
- Administer at least one hour before or two hours after meals. (2)

### DOSAGE FORMS AND STRENGTHS

1 mg/5 mL, oral solution in 16 ounce bottles. (3)

### CONTRAINDICATIONS

- Medical conditions that preclude anticholinergic therapy. (4)
- Concomitant use of solid oral dosage forms of potassium chloride. (4)

### WARNINGS AND PRECAUTIONS

- Constipation or intestinal pseudo-obstruction: May present as abdominal distention, pain, nausea, or vomiting. Assess patients for constipation, particularly within 4-5 days of initial dosing or after a dose increase. (5.1)
- Incomplete mechanical intestinal obstruction: May present as diarrhea. If obstruction is suspected, discontinue CUVPOSA and evaluate. (5.2)
- High ambient temperature: To reduce the risk of heat prostration, avoid high temperatures. (5.3)

### ADVERSE REACTIONS

The most common adverse reactions (incidence  $\geq 30\%$ ) are dry mouth, vomiting, constipation, flushing, and nasal congestion. (6)

To report SUSPECTED ADVERSE REACTIONS, contact Merz Pharmaceuticals, LLC at 866-862-1211 or FDA at 1-800-FDA-1088 or [www.fda.gov/medwatch](http://www.fda.gov/medwatch).

### DRUG INTERACTIONS

- Digoxin tablets: Use with glycopyrrolate can increase digoxin serum levels. Monitor patients and consider use of alternative dosage forms of digoxin. (7)
- Amantadine: Effects of glycopyrrolate may be increased with concomitant administration of amantadine. Consider decreasing the dose of glycopyrrolate during concomitant use. (7)
- Atenolol or metformin: Glycopyrrolate may increase serum levels of atenolol or metformin. Consider dose reduction when used with glycopyrrolate. (7)
- Haloperidol or levodopa: Glycopyrrolate may decrease serum levels of haloperidol or levodopa. Consider a dose increase when used with glycopyrrolate. (7)

### USE IN SPECIFIC POPULATIONS

- Pediatric use: The safety and effectiveness of glycopyrrolate has not been established in patients less than 3 years of age. (8.4)
- Renal impairment: Use CUVPOSA with caution in patients with renal impairment. (8.6)

See 17 for PATIENT COUNSELING INFORMATION and FDA-approved patient labeling

Revised: 09/2017

**FULL PRESCRIBING INFORMATION: CONTENTS \***

**1 INDICATIONS AND USAGE**

**2 DOSAGE AND ADMINISTRATION**

**3 DOSAGE FORMS AND STRENGTHS**

**4 CONTRAINDICATIONS**

**5 WARNINGS AND PRECAUTIONS**

5.1 Constipation or Gastrointestinal Pseudo-obstruction

5.2 Diarrhea and Intestinal Obstruction

5.3 Hot Environmental Temperatures

5.4 Operating Machinery or an Automobile

5.5 General Anticholinergic Effects

**6 ADVERSE REACTIONS**

6.1 Clinical Trials Experience

6.2 Postmarketing Experience

**7 DRUG INTERACTIONS**

**8 USE IN SPECIFIC POPULATIONS**

8.1 Pregnancy

8.2 Lactation

8.4 Pediatric Use

8.5 Geriatric Use

8.6 Renal or Hepatic Impairment

**10 OVERDOSAGE**

**11 DESCRIPTION**

**12 CLINICAL PHARMACOLOGY**

12.1 Mechanism of Action

12.2 Pharmacodynamics

12.3 Pharmacokinetics

**13 NONCLINICAL TOXICOLOGY**

13.1 Carcinogenesis, Mutagenesis, Impairment of Fertility

**14 CLINICAL STUDIES**

**16 HOW SUPPLIED/STORAGE AND HANDLING**

**17 PATIENT COUNSELING INFORMATION**

\* Sections or subsections omitted from the full prescribing information are not listed.

## FULL PRESCRIBING INFORMATION

### 1 INDICATIONS AND USAGE

CUVPOSA is indicated to reduce chronic severe drooling in patients aged 3 to 16 years with neurologic conditions associated with problem drooling (e.g., cerebral palsy).

### 2 DOSAGE AND ADMINISTRATION

CUVPOSA must be measured and administered with an accurate measuring device [see *Patient Counseling Information* (17)].

Initiate dosing at 0.02 mg/kg orally three times daily and titrate in increments of 0.02 mg/kg every 5-7 days based on therapeutic response and adverse reactions. The maximum recommended dosage is 0.1 mg/kg three times daily not to exceed 1.5-3 mg per dose based upon weight. For greater detail, see Table 1.

During the four-week titration period, dosing can be increased with the recommended dose titration schedule while ensuring that the anticholinergic adverse events are tolerable. Prior to each increase in dose, review the tolerability of the current dose level with the patient's caregiver.

CUVPOSA should be dosed at least one hour before or two hours after meals.

The presence of high fat food reduces the oral bioavailability of CUVPOSA if taken shortly after a meal [see *Clinical Pharmacology* (12.3)].

**Table 1: Recommended Dose Titration Schedule (each dose to be given three times daily)**

Weight		Dose Level 1		Dose Level 2		Dose Level 3		Dose Level 4		Dose Level 5	
kg	lbs	(~0.02 mg/kg)		(~0.04 mg/kg)		(~0.06 mg/kg)		(~0.08 mg/kg)		(~0.1 mg/kg)	
13-17	27-38	0.3 mg	1.5 mL	0.6 mg	3 mL	0.9 mg	4.5 mL	1.2 mg	6 mL	1.5 mg	7.5 mL
18-22	39-49	0.4 mg	2 mL	0.8 mg	4 mL	1.2 mg	6 mL	1.6 mg	8 mL	2.0 mg	10 mL
23-27	50-60	0.5 mg	2.5 mL	1.0 mg	5 mL	1.5 mg	7.5 mL	2.0 mg	10 mL	2.5 mg	12.5 mL
28-32	61-71	0.6 mg	3 mL	1.2 mg	6 mL	1.8 mg	9 mL	2.4 mg	12 mL	3.0 mg	15 mL
33-37	72-82	0.7 mg	3.5 mL	1.4 mg	7 mL	2.1 mg	10.5 mL	2.8 mg	14 mL	3.0 mg	15 mL
38-42	83-93	0.8 mg	4 mL	1.6 mg	8 mL	2.4 mg	12 mL	3.0 mg	15 mL	3.0 mg	15 mL
43-47	94-104	0.9 mg	4.5 mL	1.8 mg	9 mL	2.7 mg	13.5 mL	3.0 mg	15 mL	3.0 mg	15 mL
≥48	≥105	1.0 mg	5 mL	2.0 mg	10 mL	3.0 mg	15 mL	3.0 mg	15 mL	3.0 mg	15 mL

### 3 DOSAGE FORMS AND STRENGTHS

CUVPOSA is available as a 1mg/5 mL clear, cherry-flavored solution for oral administration in 16 ounce bottles.

### 4 CONTRAINDICATIONS

CUVPOSA is contraindicated in:

- Patients with medical conditions that preclude anticholinergic therapy (e.g., glaucoma, paralytic ileus, unstable cardiovascular status in acute hemorrhage, severe ulcerative colitis, toxic megacolon complicating ulcerative colitis, myasthenia gravis).
- Patients taking solid oral dosage forms of potassium chloride. The passage of potassium chloride tablets through the gastrointestinal (GI) tract may be arrested or delayed with coadministration of CUVPOSA.

## 5 WARNINGS AND PRECAUTIONS

### 5.1 Constipation or Intestinal Pseudo-obstruction

Constipation is a common dose-limiting adverse reaction which sometimes leads to glycopyrrolate discontinuation [see *Adverse Reactions* (6.1)]. Assess patients for constipation, particularly within 4-5 days of initial dosing or after a dose increase. Intestinal pseudo-obstruction has been reported and may present as abdominal distention, pain, nausea or vomiting.

### 5.2 Incomplete Mechanical Intestinal Obstruction

Diarrhea may be an early symptom of incomplete mechanical intestinal obstruction, especially in patients with ileostomy or colostomy. If incomplete mechanical intestinal obstruction is suspected, discontinue treatment with CUVPOSA and evaluate for intestinal obstruction.

### 5.3 High Ambient Temperatures

In the presence of high ambient temperature, heat prostration (fever and heat stroke due to decreased sweating) can occur with the use of anticholinergic drugs such as CUVPOSA. Advise patients/caregivers to avoid exposure of the patient to hot or very warm environmental temperatures.

### 5.4 Operating Machinery or an Automobile

CUVPOSA may produce drowsiness or blurred vision. As appropriate for a given age, warn the patient not to engage in activities requiring mental alertness such as operating a motor vehicle or other machinery, or performing hazardous work while taking CUVPOSA.

### 5.5 Anticholinergic Drug Effects

Use CUVPOSA with caution in patients with conditions that are exacerbated by anticholinergic drug effects including:

- Autonomic neuropathy
- Renal disease
- Ulcerative colitis – Large doses may suppress intestinal motility to the point of producing a paralytic ileus and for this reason may precipitate or aggravate “toxic megacolon”, a serious complication of the disease
- Hyperthyroidism
- Coronary heart disease, congestive heart failure, cardiac tachyarrhythmias, tachycardia, and hypertension
- Hiatal hernia associated with reflux esophagitis, since anticholinergic drugs may aggravate this condition

## 6 ADVERSE REACTIONS

The following serious adverse reactions are described elsewhere in the labeling:

- Constipation or intestinal pseudo-obstruction [see *Warnings and Precautions* (5.1)]
- Incomplete mechanical intestinal obstruction [see *Warnings and Precautions* (5.2)]

The most common adverse reactions reported with CUVPOSA are dry mouth, vomiting, constipation, flushing, and nasal congestion.

### 6.1 Clinical Trials Experience

Because clinical trials are conducted under widely varying conditions, adverse reaction rates observed in the clinical trials of a drug cannot be directly compared to rates in the clinical trials of another drug and may not reflect the rates observed in practice.

The data described below reflect exposure to CUVPOSA in 151 subjects, including 20 subjects who participated in an 8-week placebo-controlled study (Study 1) and 137 subjects who participated in a 24-week open-label study (six subjects who received CUVPOSA in the placebo-controlled study and 131 new subjects).

Table 2 presents adverse reactions reported by  $\geq 15\%$  of CUVPOSA-treated subjects from the placebo-controlled clinical trial.

**Table 2: Adverse Reactions Occurring in  $\geq 15\%$  of CUVPOSA-Treated Subjects and at a Greater Frequency than Placebo in Study 1**

	<b>CUVPOSA (N=20) n (%)</b>	<b>Placebo (N=18) n (%)</b>
Dry Mouth	8 (40%)	2 (11%)
Vomiting	8 (40%)	2 (11%)
Constipation	7 (35%)	4 (22%)
Flushing	6 (30%)	3 (17%)
Nasal Congestion	6 (30%)	2 (11%)
Headache	3 (15%)	1 (6%)
Sinusitis	3 (15%)	1 (6%)
Upper Respiratory Tract Infection	3 (15%)	0
Urinary Retention	3 (15%)	0



The following adverse reactions occurred at a rate of <2% of patients receiving CUVPOSA in the open-label study.

Gastrointestinal: Abdominal distention, abdominal pain, stomach discomfort, chapped lips, flatulence, retching, dry tongue

General Disorders: Irritability, pain

Infections: Pneumonia, sinusitis, tracheostomy infection, upper respiratory tract infection, urinary tract infection

Investigations: Heart rate increase

Metabolism and Nutrition: Dehydration

Nervous System: Headache, convulsion, dysgeusia, nystagmus

Psychiatric: Agitation, restlessness, abnormal behavior, aggression, crying, impulse control disorder, moaning, mood altered

Respiratory: Increased viscosity of bronchial secretion, nasal congestion, nasal dryness

Skin: Dry skin, pruritus, rash

Vascular: Pallor

## 6.2 Postmarketing Experience

The following adverse reactions have been identified during postapproval use of other formulations of glycopyrrolate for other indications. Because these reactions are reported voluntarily from a population of uncertain size, it is not always possible to reliably estimate their frequency or establish a causal relationship to drug exposure.

Additional adverse reactions identified during postapproval use of glycopyrrolate tablets include: loss of taste and suppression of lactation.

## 7 DRUG INTERACTIONS

### Drugs Affected by Reduced GI Transit Time

Glycopyrrolate reduces GI transit time, which may result in altered release of certain drugs when formulated in delayed- or controlled-release dosage forms.

- The passage of potassium chloride tablets through the GI tract may be arrested or delayed with coadministration of glycopyrrolate. Solid dosage forms of potassium chloride are contraindicated [see *Contraindications* (4)].
- Digoxin administered as slow dissolution oral tablets may have increased serum levels and enhanced action when administered with glycopyrrolate. Monitor patients receiving slow dissolution digoxin for increased action if glycopyrrolate is coadministered regularly. Consider the use of other oral dosage forms of digoxin (e.g., elixir or capsules).

### Amantadine

The anticholinergic effects of glycopyrrolate may be increased with concomitant administration of amantadine. Consider decreasing the dose of glycopyrrolate during coadministration of amantadine.

### Drugs Whose Plasma Levels May be Increased by Glycopyrrolate

Coadministration of glycopyrrolate may result in increased levels of certain drugs.

- Atenolol's bioavailability may be increased with coadministration of glycopyrrolate. A reduction in the atenolol dose may be needed.
- Metformin plasma levels may be elevated with coadministration of glycopyrrolate, increasing metformin's pharmacologic and toxic effects. Monitor clinical response to metformin with concomitant glycopyrrolate administration; consider a dose reduction of metformin if warranted.

### Drugs Whose Plasma Levels May be Decreased by Glycopyrrolate

Coadministration of glycopyrrolate may result in decreased levels of certain drugs.

- Haloperidol's serum level may be decreased when coadministered with glycopyrrolate, resulting in worsening of schizophrenic symptoms, and development of tardive dyskinesia. Closely monitor patients if coadministration cannot be avoided.
- Levodopa's therapeutic effect may be reduced with glycopyrrolate administration. Consider increasing the dose of levodopa.

## 8 USE IN SPECIFIC POPULATIONS

### 8.1 Pregnancy

#### Risk Summary

There are no available data in pregnant women for Cuvposa to inform decisions concerning any drug-associated risks. In pregnant rats, daily oral administration of glycopyrrolate during organogenesis at dose exposures 2.5 to 113 times the exposure at the maximum recommended human dose (MRHD) did not result in an increased incidence of gross external or visceral defects [see *Data*]. When glycopyrrolate was administered intravenously to pregnant rabbits during organogenesis at dose exposures equivalent to up to approximately 7.8 times the exposure at the MRHD, no adverse effects on embryo-fetal development were seen. The estimated background risk of major birth defects and miscarriage for the indicated population is unknown. In the U.S. general population, the estimated background risk of major birth defects and miscarriage in clinically recognized pregnancies is 2-4% and 15-20%, respectively.

#### Animal Data

Glycopyrrolate was orally administered to pregnant rats at dosages of 50, 200, and 400 mg/kg/day during the period of organogenesis. These dosages resulted in systemic exposures (estimated AUC<sub>0-inf</sub> values) approximately 2.5, 23, and 113 times, respectively, the estimated systemic exposure in humans at

the MRHD (9 mg per day, administered in three divided doses). Glycopyrrolate had no effect on maternal survival, but significantly reduced mean maternal body weight gain over the period of dosing at all dosages evaluated. Mean fetal weight was significantly reduced in the 200 and 400 mg/kg/day dose groups. There were two litters with all resorbed fetuses in the 400 mg/kg/day dose group. There were no effects of treatment on the incidence of gross external or visceral defects. Minor treatment-related skeletal effects included reduced ossification of various bones in the 200 and 400 mg/kg/day dose groups; these skeletal effects were likely secondary to maternal toxicity.

Glycopyrrolate was intravenously administered to pregnant rabbits at dosages of 0.1, 0.5, and 1.0 mg/kg/day during the period of organogenesis. These dosages resulted in systemic exposures (estimated  $AUC_{0-inf}$  values) approximately 0.8, 4.6, and 7.8 times, respectively, the estimated systemic exposure in humans at the MRHD. Glycopyrrolate did not affect maternal survival under the conditions of this study. Mean maternal body weight gain and mean food consumption over the period of dosing were lower than the corresponding control value in the 0.5 and 1.0 mg/kg/day treatment groups. There were no effects of treatment on fetal parameters, including fetal survival, mean fetal weight, and the incidence of external, visceral, or skeletal defects.

Female rats that were pregnant or nursing were orally dosed with glycopyrrolate daily at dosages of 0, 50, 200, or 400 mg/kg/day, beginning on day 7 of gestation, and continuing until day 20 of lactation. These dosages resulted in systemic exposures (estimated  $AUC_{0-inf}$  values) approximately 2.5, 23, and 113 times, respectively, the estimated systemic exposure in humans at the MRHD (9 mg per day, administered in three divided doses). Mean body weight of pups in all treatment groups was reduced compared to the control group during the period of nursing, but eventually recovered to be comparable to the control group, post-weaning. No other notable delivery or litter parameters were affected by treatment in any group, including no effects on mean duration of gestation or mean numbers of live pups per litter. No treatment-related effects on survival or adverse clinical signs were observed in pups. There were no effects of maternal treatment on behavior, learning, memory, or reproductive function of pups.

## 8.2 Lactation

### Risk Summary

There are no data on the presence of glycopyrrolate or its metabolites in human milk, the effects on the breastfed infant, or the effects on milk production. The developmental and health benefits of breastfeeding should be considered along with the mother's clinical need for CUVPOSA and any potential adverse effects on the breastfed infant from CUVPOSA or from the underlying maternal condition.

## 8.4 Pediatric Use

CUVPOSA was evaluated for chronic severe drooling in patients aged 3-16 years with neurologic conditions associated with problem drooling. CUVPOSA has not been studied in subjects under the age of 3 years.

## 8.5 Geriatric Use

Clinical studies of CUVPOSA did not include subjects aged 65 and over.

## 8.6 Renal Impairment

Because glycopyrrolate is largely renally eliminated, CUVPOSA should be used with caution in patients with renal impairment [see *Clinical Pharmacology* (12.3)].

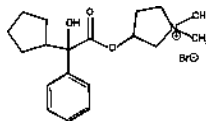
## 10 OVERDOSAGE

Because glycopyrrolate is a quaternary amine which does not easily cross the blood-brain barrier, symptoms of glycopyrrolate overdose are generally more peripheral in nature rather than central compared to other anticholinergic agents. In case of accidental overdose, therapy may include:

- Maintain an open airway, providing ventilation as necessary.
- Managing any acute conditions such as hyperthermia, coma and or seizures as applicable, and managing any jerky myoclonic movements or choreoathetosis which may lead to rhabdomyolysis in some cases of anticholinergic overdose.
- Administering a quaternary ammonium anticholinesterase such as neostigmine to help alleviate-peripheral anticholinergic effects such as anticholinergic induced ileus.
- Administering activated charcoal orally as appropriate.

## 11 DESCRIPTION

CUVPOSA is an anticholinergic drug available as an oral solution containing 1 mg glycopyrrolate per 5 mL. The chemical name for glycopyrrolate is pyrrolidinium, 3-[(cyclopentylhydroxyphenylacetyl) oxy]-1,1-dimethyl-,bromide. The chemical structure is:



The empirical formula for CUVPOSA is  $C_{19}H_{28}BrNO_3$  and the molecular weight is 398.33. The inactive ingredients in CUVPOSA are: citric acid, glycerin, natural and artificial cherry flavor, methylparaben, propylene glycol, propylparaben, saccharin sodium, sodium citrate, sorbitol solution, and purified water.

## 12 CLINICAL PHARMACOLOGY

### 12.1 Mechanism of Action

Glycopyrrolate is a competitive inhibitor of acetylcholine receptors that are located on certain peripheral tissues, including salivary glands. Glycopyrrolate indirectly reduces the rate of salivation by preventing the stimulation of these receptors.

## 12.2 Pharmacodynamics

Glycopyrrolate inhibits the action of acetylcholine on salivary glands thereby reducing the extent of salivation.

## 12.3 Pharmacokinetics

### Absorption

In a parallel study of children (n=6 per group) aged 7-14 years undergoing intraocular surgery, subjects received either intravenous (IV) or oral glycopyrrolate as a premedication. The mean absolute bioavailability of oral glycopyrrolate tablets was low (approximately 3%) and highly variable among subjects (range 1.3 to 13.3%). A similar pattern of low and variable relative bioavailability is seen in adults.

Analysis of population pharmacokinetic data from normal adults and children with cerebral palsy associated chronic moderate to severe drooling failed to demonstrate linear pharmacokinetics across the dose range. In the same analysis, population estimates of the apparent oral clearance (scaled by weight in children and adults) ranged from 5.28 - 38.95 L/hr/kg for healthy adults and 8.07 - 25.65 L/hr/kg for patients with cerebral palsy, a reflection of the low and highly variable oral bioavailability of glycopyrrolate.

Absorption of CUVPOSA (fasting) was compared to that of a marketed glycopyrrolate oral tablet. The  $C_{max}$  after oral solution administration was 23% lower compared to tablet administration and  $AUC_{0-inf}$  was 28% lower after oral solution administration. Mean  $C_{max}$  after oral solution administration in the fasting state was 0.318 ng/mL, and mean  $AUC_{0-24}$  was 1.74 ng·hr/mL. Mean time to maximum plasma concentration for CUVPOSA was 3.1 hours, and mean plasma half-life was 3.0 hours.

In healthy adults, a high fat meal was shown to significantly affect the absorption of glycopyrrolate oral solution (10 mL, 1 mg/5 mL). The mean  $C_{max}$  under fed high fat meal conditions was approximately 74% lower than the  $C_{max}$  observed under fasting conditions. Similarly, mean  $AUC_{0-T}$  was reduced by about 78% by the high fat meal compared with the fasting  $AUC_{0-T}$ . A high fat meal markedly reduces the oral bioavailability of CUVPOSA. Therefore, CUVPOSA should be dosed at least one hour before or two hours after meals. Pharmacokinetic results (mean ± SD) are described in Table 3.

**Table 3: Pharmacokinetic Parameters (mean±SD) for CUVPOSA, Fasting and Fed, in Healthy Adults**

	$C_{max}$ (ng/mL)	$T_{max}$ (hrs)	$AUC_{0-T}$ (ng·hr/mL)	$AUC_{0-inf}$ (ng·hr/mL)	$T_{1/2}$ (hrs)
<b>Fasting</b> (n=37)	0.318 ± 0.190	3.10 ± 1.08	1.74 ± 1.07	1.81 ± 1.09	3.0 ± 1.2
<b>Fed</b> (n=36)	0.084 ± 0.081	2.60 ± 1.12	0.38 ± 0.14	0.46 ± 0.13*	3.2 ± 1.1*

\* n=35

### Distribution

After IV administration, glycopyrrolate has a mean volume of distribution in children aged 1 to 14 years of approximately 1.3 to 1.8 L/kg, with a range from 0.7 to 3.9 L/kg. In adults aged 60-75 years, the volume of distribution was lower (0.42 L/kg +/- 0.22).

### Metabolism

In adult patients who underwent surgery for cholelithiasis and were given a single IV dose of tritiated glycopyrrolate, approximately 85% of total radioactivity was excreted in urine and <5% was present in T-tube drainage of bile. In both urine and bile, >80% of the radioactivity corresponded to unchanged drug. These data suggest a small proportion of IV glycopyrrolate is excreted as one or more metabolites.

### Elimination

Approximately 65-80% of an IV glycopyrrolate dose was eliminated unchanged in urine in adults. In two studies, after IV administration to pediatric patients ages 1-14 years, mean clearance values ranged from 1.01- 1.41 L/kg/hr (range 0.32 -2.22 L/kg/hr). In adults, IV clearance values were 0.54 ± 0.14 L/kg/hr.

### Pediatrics

The estimated apparent clearance of glycopyrrolate from a population pharmacokinetic analysis (scaled by weight in children and adults) of oral and IV data was found to be 13.2 L/hr/kg or 92.7 L/hr for a typical 70 kg subject. In the same population based analysis, gender was not identified as having an effect on either glycopyrrolate clearance or systemic exposure.

### Gender

Population pharmacokinetic evaluation of adults and children administered IV or oral glycopyrrolate identified no effect of gender on glycopyrrolate clearance or systemic exposure.

#### Race

The pharmacokinetics of glycopyrrolate by race has not been characterized.

#### Elderly

Glycopyrrolate pharmacokinetics have not been characterized in the elderly.

#### Renal Impairment

In one study, glycopyrrolate 4 mcg/kg was administered intravenously in uremic patients undergoing renal transplantation surgery. Mean AUC (10.6 mcg·h/L), mean plasma clearance (0.43 L/hr/kg) and mean 3-hour urinary excretion (0.7%) for glycopyrrolate were significantly different than those of control patients (3.73 µg·h/L, 1.14 L/hr/kg, and 50%, respectively). These results suggest that elimination of glycopyrrolate is severely impaired in patients with renal failure.

#### Hepatic Impairment

Glycopyrrolate is largely renally eliminated. The pharmacokinetics of glycopyrrolate have not been evaluated in patients with hepatic impairment.

### **13 NONCLINICAL TOXICOLOGY**

#### **13.1 Carcinogenesis, Mutagenesis, Impairment of Fertility**

When glycopyrrolate was administered via oral gavage to mice for up to 24 months at dosages of 2.5, 7, and 20 mg/kg/day in both genders, resulting in systemic exposures (estimated AUC<sub>0-inf</sub> values) approximately 0.1, 0.3, and 0.8 times, respectively, the estimated systemic exposure in humans at the MRHD (9 mg per day, administered in three divided doses), no significant changes in tumor incidence were observed when compared to control.

When glycopyrrolate was administered via oral gavage to rats for up to 24 months at dosages of 5, 15, and 40 mg/kg/day in both genders, resulting in systemic exposures approximately 0.2, 0.8, and 2 times, respectively, the estimated systemic exposure in humans at the MRHD, no significant changes in tumor incidence were observed when compared to control.

Glycopyrrolate did not elicit any genotoxic effects in the Ames mutagenicity assay, the human lymphocyte chromosome aberration assay, or the micronucleus assay.

Glycopyrrolate was assessed for effects on fertility or general reproductive function in rats. Rats of both genders received glycopyrrolate at dosages up to 100 mg/kg/day via oral gavage, resulting in systemic exposures (estimated AUC<sub>0-inf</sub> values) in males and females up to approximately 11 and 15 times, respectively, the estimated systemic exposure in humans at the MRHD. No treatment-related effects on fertility or reproductive parameters were observed in either gender in this study.

### **14 CLINICAL STUDIES**

CUVPOSA was evaluated in a multi-center, randomized, double-blind, placebo-controlled, parallel, eight-week study for the control of pathologic drooling in children (Study 1). The study enrolled 38 subjects aged 3-23 years; thirty-six subjects were aged 3-16 years and two patients were greater than 16 years. The subjects were male or female, weighed at least 13 kg (27 lbs), and had cerebral palsy, mental retardation, or another neurologic condition associated with problem drooling defined as drooling in the absence of treatment so that clothing became damp on most days (approximately five to seven days per week). Subjects were randomized in a 1:1 fashion to receive CUVPOSA or placebo. Doses of study medication were titrated over a 4-week period to optimal response beginning at 0.02 mg/kg three times a day increasing doses in increments of approximately 0.02 mg/kg three times per day every 5-7 days, not to exceed the lesser of approximately 0.1 mg/kg three times per day or 3 mg three times per day.

Subjects were evaluated on the 9-point modified Teacher's Drooling Scale (mTDS), which is presented below. The mTDS evaluations were recorded by parents/caregivers 3 times daily approximately two hours post-dose on evaluation days during pre-treatment baseline and at Weeks 2, 4, 6 and 8 of therapy.

#### Modified Teacher's Drooling Scale

- 1= Dry: never drools
- 2= Mild: only the lips are wet; occasionally
- 3= Mild: only the lips are wet; frequently
- 4= Moderate: wet on the lips and chin; occasionally
- 5= Moderate: wet on the lips and chin; frequently
- 6= Severe: drools to the extent that clothing becomes damp; occasionally
- 7= Severe: drools to the extent that clothing becomes damp; frequently
- 8= Profuse: clothing, hands, tray, and objects become wet; occasionally
- 9= Profuse: clothing, hands, tray, and objects become wet; frequently

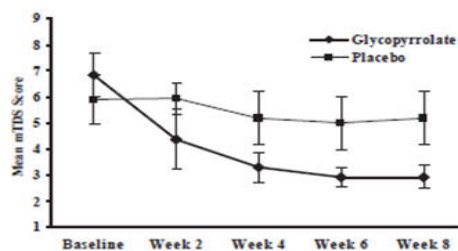
Responders were defined as subjects with at least a 3-point reduction in mean daily mTDS scores from baseline to Week 8. Table 4 presents the proportion of responders at Week 8 and Figure 1 presents the mean mTDS values from baseline through Week 8.

**Table 4: Percentage of Responders at Week 8**

CUVPOSA Group	Placebo Group
---------------	---------------

(N=20)	(N=18)
15/20 (75%)	2/18 (11%)

Figure 1. Mean ( $\pm$  2 Standard Errors) mDTS Scores



## 16 HOW SUPPLIED/STORAGE AND HANDLING

NDC 0259-0501-16; 1 mg/5mL clear, cherry-flavored solution; 16 oz. bottle.

Store at room temperature 20° - 25°C (68° - 77°F); excursions permitted to 15° - 30°C (59° - 86°F) [See USP Controlled Room Temperature].

## 17 PATIENT COUNSELING INFORMATION

See FDA-approved patient labeling (Patient Information)

- Advise patients/caregivers to measure CUVPOSA with an accurate measuring device. A household teaspoon is not an accurate measuring device. Patients/caregivers should use a dosing cup available in pharmacies to accurately measure the correct milliliter dose. An oral syringe, also available in pharmacies, should be used to dispense CUVPOSA into the child's mouth from the cup. A pharmacist can recommend an appropriate measuring device and can provide instructions for measuring the correct dose.
- Administering CUVPOSA with a high fat meal substantially reduces the amount of glycopyrrolate absorbed. Administer CUVPOSA at least one hour before or two hours after meals.
- CUVPOSA is started at a low dose and gradually titrated over a period of weeks based on therapeutic response and adverse reactions. Patients/caregivers should not increase the dose without the physician's permission.
- Common adverse reactions from CUVPOSA include overly dry mouth, constipation, vomiting, flushing of the skin or face, and urinary retention. Side effects can sometimes be difficult to detect in some patients with neurologic problems who cannot adequately communicate how they feel. If side effects become troublesome after increasing a dose, decrease the dose to the prior one and contact your physician.
- Constipation is the most common side effect of glycopyrrolate, and if constipation occurs, stop administering glycopyrrolate to the patient and call their healthcare practitioner.
- Inability of the patient to urinate, dry diapers or undergarments, irritability or crying may be signs of urinary retention, and if urinary retention occurs, patients/caregivers should stop administering glycopyrrolate and call their healthcare practitioner.
- If the patient develops a skin rash, hives or an allergic reaction, parents/caregivers should stop administering glycopyrrolate and call their healthcare practitioner as this could be a sign of hypersensitivity to this product.
- Drugs like glycopyrrolate can reduce sweating, and if the patient is in a hot environment and flushing of the skin occurs this may be due to overheating. Avoid exposure of the patient to hot or very warm environmental temperatures to avoid overheating and the possibility of heat exhaustion or heat stroke.

Manufactured by:  
Mikart, Inc.  
Atlanta, GA 30318

Manufactured for:  
Merz North America, Inc.  
Raleigh, NC 27615

© 2017 Merz Pharmaceuticals, LLC  
CUVPOSA® is a registered trademark of Merz Pharmaceuticals, LLC

GLY-PI-08



## **PATIENT and CAREGIVER INFORMATION**

### **CUVPOSA (glycopyrrolate) Oral Solution**

Please read the Patient and Caregiver Information that comes with CUVPOSA before you start giving it to your child, and each time you get a refill. This leaflet does not take the place of talking with your doctor about your child's medical condition or treatment.

#### **What is CUVPOSA?**

CUVPOSA is a prescription medicine used in children with medical conditions that cause too much (abnormal) drooling.

#### **Who should not take CUVPOSA?**

Do not give CUVPOSA to anyone who:

- has problems urinating
- has a bowel problem called paralytic ileus
- lacks normal bowel tone or tension
- has severe ulcerative colitis or certain other serious bowel problems with severe ulcerative colitis
- has myasthenia gravis

#### **What should I tell my doctor before giving CUVPOSA to my child?**

Tell your doctor if your child:

- has any allergies
- has any stomach or bowel problems, including ulcerative colitis
- has any problems with constipation
- has thyroid problems
- has high blood pressure
- has heart problems or abnormal heart beats
- has a hiatal hernia with gastroesophageal reflux disease (GERD)
- has any eye problems
- has any problems urinating
- has any other medical conditions
- is pregnant or plans to become pregnant. It is not known if CUVPOSA can harm an unborn baby.
- is breastfeeding or plans to breastfeed. It is not known if CUVPOSA passes into breast milk and if it can harm the baby.

**Tell your doctor about all of the medicines that your child takes**, including prescription and non-prescription medicines, vitamins, and herbal supplements. Some medicine may affect the way CUVPOSA works, and CUVPOSA may affect how some other medicines work.

#### **How should I give CUVPOSA?**

- Give CUVPOSA exactly as prescribed by your child's doctor.
- Give CUVPOSA 1 hour before or 2 hours after meals.
- Your doctor will tell you how much (milliliters or mLs) of CUVPOSA to give your child.
- Do not change the dose of CUVPOSA unless your doctor tells you to.
- You must measure the dose of CUVPOSA before giving it to your child. Use a special marked dose measuring cup (available at most pharmacies) to measure the right dose of CUVPOSA.
- To help make sure that your child swallows the dose, you should use an oral syringe to give the child each dose of CUVPOSA, after you measure the dose needed with a dose measuring cup. Oral syringes are also available at most pharmacies.
- If you have questions about how to measure the dose or how to use an oral syringe, ask your pharmacist or doctor.
- The dose of CUVPOSA that is needed to control drooling may be different for each child. CUVPOSA is usually started at a low dose, and slowly increased as directed by your doctor. This slow increase in dose continues until the best dose for your child is reached, to control drooling.
- During this time it is important to stay in close contact with your child's doctor, and tell the doctor about any side effects that your child has. See "What are the possible side effects of CUVPOSA?"

### What should I avoid while taking CUVPOSA?

- CUVPOSA may cause sleepiness or blurred vision. Do not drive a car, operate heavy machinery, or do other dangerous activities while taking CUVPOSA.
- Avoid overheating. See “What are the possible side effects of CUVPOSA?”

### What are the possible side effects of CUVPOSA?

CUVPOSA can cause serious side effects including:

- **Constipation.** Constipation is common with CUVPOSA. Tell your doctor if your child strains with bowel movements, goes longer between bowel movements, cannot have a bowel movement, or their stomach is firm and large. The dose of CUVPOSA may need to be decreased or stopped.
- **Diarrhea and intestinal blockage.** Diarrhea can be an early symptom of a blockage in the intestine. This is especially true if your child has a colostomy or ileostomy. Tell your doctor if your child has any diarrhea while taking CUVPOSA.
- **Problems with control of body temperature (overheating or heat stroke).** CUVPOSA can cause your child to sweat less. Your child can become overheated, and develop heat stroke if they are in an area that is very hot. Avoid overheating. Call your doctor right away if your child becomes sick and has any of these symptoms of heatstroke:
  - hot, red skin
  - decreased alertness or passing out (unconsciousness)
  - fast, weak pulse
  - fast, shallow breathing
  - increased body temperature (fever)

The most common side effects of CUVPOSA include:

- dry mouth
- vomiting
- flushing of the face or skin
- nasal congestion
- headache
- swollen sinuses (sinusitis)
- upper respiratory tract infection
- problems urinating, difficulty starting urination

Tell your doctor if your child has any side effect that concerns you or that does not go away. These are not all the possible side effects of CUVPOSA.

Call your doctor for medical advice about side effects. You may report side effects to FDA at 1-800-FDA-1088.

### How should I store CUVPOSA?

Store CUVPOSA between 68°F to 77°F (20°C to 25°C).

### Keep CUVPOSA out of the reach of children.

### General information about CUVPOSA:

Medicines are sometimes prescribed for purposes other than those listed in a Patient Information leaflet. Do not use CUVPOSA for a condition for which it was not prescribed. Do not give CUVPOSA to other people even if they have the same condition. It may harm them.

This leaflet summarizes the most important information about CUVPOSA. If you would like more information, talk with your doctor. You can ask your doctor or pharmacist for information about CUVPOSA that is written for health professionals.

For more information, go to: [www.cuvposa.com](http://www.cuvposa.com) or call 866-862-1211.

### What are the ingredients in CUVPOSA?

Active Ingredient: glycopyrrolate

Inactive Ingredients: citric acid, glycerin, natural and artificial cherry flavor, methylparaben, propylene glycol, propylparaben, saccharin sodium, sodium citrate, sorbitol solution, and purified water

Issued May 2011

Manufactured by:  
Mikart, Inc.  
Atlanta, GA 30318

Manufactured for:  
Merz North America, Inc.  
Raleigh, NC 27615

© 2017 Merz Pharmaceuticals, LLC  
CUVPOSA® is a registered trademark of Merz Pharmaceuticals, LLC

GLY-PPI-08

Rev 09/2017